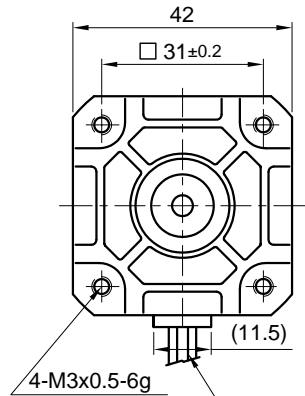
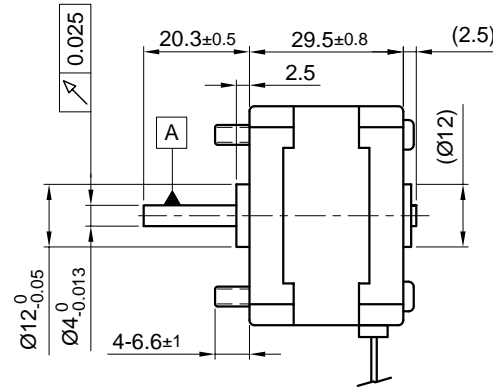


Front view and mounting



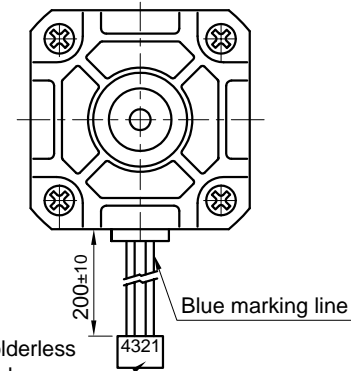
UL 2651 AWG 26 CSA AWM  
(105°, 300V) P.V.C

Side view



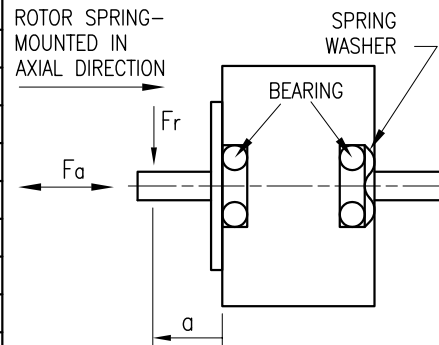
Connector: Japan Solderless  
Terminal MGF Co. Ltd  
Housing: 04KR-6S

Rear view



SPECIFICATION	CONNECTION	BIPOLAR
VOLTAGE (VDC)		3.9
AMPS/PHASE		0.7
RESISTANCE/PHASE (Ohms)@25°C		5.5±10%
INDUCTANCE/PHASE (mH) @1KHz		11±20%
HOLDING TORQUE (Nm) [lb-in]		0.23 [2.035]
DETENT TORQUE (Nm) [lb-in]		0.015 [0.133]
STEP ANGLE (°)		1.8
STEP ACCURACY (NON-ACCUM)		±5%
ROTOR INERTIA (Kg-m <sup>2</sup> ) [lb-in <sup>2</sup> ]		4.0x10 <sup>-6</sup> [1.37x10 <sup>-2</sup> ]
WEIGHT (Kg) [lb]		0.21 [0.463]
TEMPERATURE RISE: MAX.80°C (MOTOR STANDSTILL; FOR 2 PHASE ENERGIZED)		
AMBIENT TEMPERATURE -10°~ 50°C [14°F ~ 122°F]		
INSULATION RESISTANCE 100 MOhm (UNDER NORMAL TEMPERATURE AND HUMIDITY)		
INSULATION CLASS B 130° [266°F]		
DIELECTRIC STRENGTH 500VAC FOR 1 MIN. (BETWEEN THE MOTOR COILS AND THE MOTOR CASE)		
AMBIENT HUMIDITY MAX. 85% (NO CONDENSATION)		

PERMISSIBLE RADIAL+AXIAL FORCE

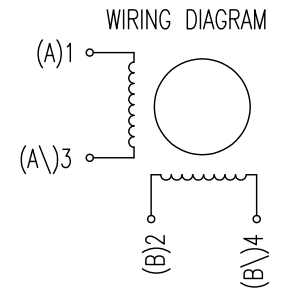


AXIAL-FORCE Fa (N)	n.a.	
DISTANCE a (mm)	15	
RADIAL-FORCE Fr (N)	9.8	
	AXIAL	RADIAL
SHAFT PLAY (mm)	0.65	n.a.
AT LOAD MAX: (N)	0	n.a.

TYPE OF CONNECTION (EXTERN)	MOTOR			
	BIPOLAR	CONNECTOR PIN NO.	LEADS	WINDING
A —	1	BLU	A	
A\ —	3	WHT	A\	
B —	2	WHT	B	
B\ —	4	WTH	B\'	

FULL STEP 2 PHASE-Ex.,  
WHEN FACING MOUNTING END (X)

STEP	A	B	A\'	B\'	CCW	CW
1	+	+	-	-	↓	↑
2	-	+	+	-	↓	↑
3	-	-	+	+	↓	↑
4	+	-	-	+	↓	↑



NANOTEC:				SCALE FREE	APVD	<i>S.Ha.</i>	16.01.07	<b>STEPPING MOTOR</b>
SL4218S0704-A				X ±0.5	CHKD			
REV	DESCRIPTION	DATE	APVD	1PL ±0.2	DRN	<i>J.W.</i>	27.09.06	DWG.NO
				2PL ±0.1	SIGNATURE		DATE	SL4218S0704-A
				ANGLE ±30'				