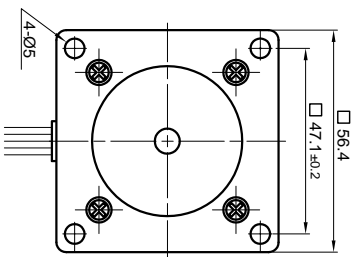
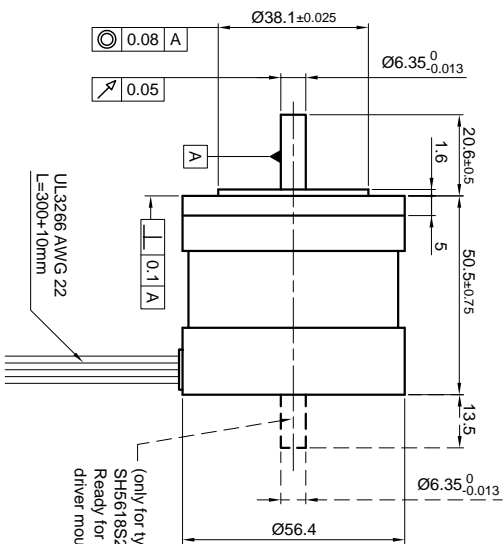


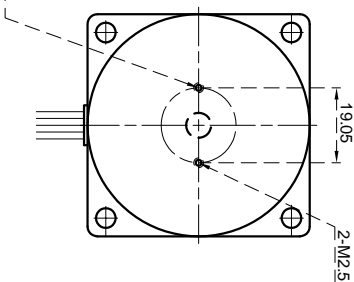
Front view and mounting



Side view

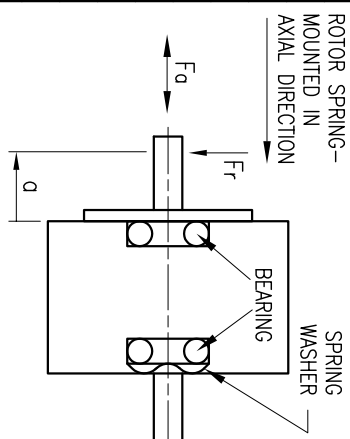


Rear view



SPECIFICATION	CONNECTION	
	UNIPOLAR OR BIPOLAR-1 WINDING	BIPOLAR
VOLTAGE (VDC)	1.9	2.65
AMPS/PHASE	2.6	1.84
RESISTANCE/PHASE (Ohms)@25°C	0.72±15%	1.44±15%
INDUCTANCE/PHASE (mH) @1KHz	1.2±20%	4.8±20%
HOLDING TORQUE (Nm) [lb-in]	0.55 [4.868]	0.778 [6.885]
DETTENT TORQUE (Nm) [lb-in]	0.0165 [0.146]	0.778 [6.885]
STEP ANGLE (°)		1.8
STEP ACCURACY (NON-ACCUM)		±5%
ROTOR INERTIA (kg-m ²) [lb-in ²]		1.15x10 ⁻⁵ [0.039]
WEIGHT (kg) [lb]		0.52 [1.147]

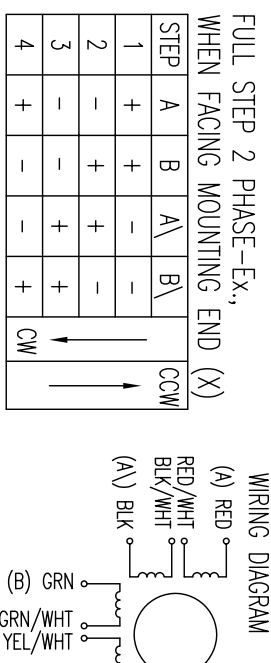
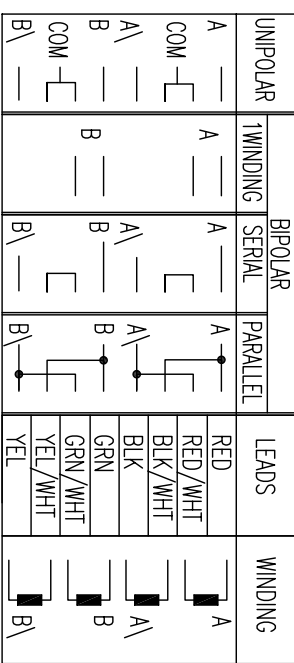
PERMISSIBLE RADIAL+AXIAL FORCE



TEMPERATURE RISE: MAX.80°C (MOTOR STANDSTILL; FOR 2 PHASE ENERGIZED)	AXIAL-FORCE F _a (N)	F _a =10
AMBIENT TEMPERATURE -10°~ 50°C [14°F ~ 122°F]	DISTANCE a (mm)	5 10 15 20
INSULATION RESISTANCE 100 Mohm (UNDER NORMAL TEMPERATURE AND HUMIDITY)	RADIAL-FORCE F _r (N)	130 90 70 52
INSULATION CLASS B 130° [266°F]	AXIAL PLAY (mm)	0.075
DIELECTRIC STRENGTH 500VAC FOR 1 MIN. (BETWEEN THE MOTOR COILS AND THE MOTOR CASE)	SHAFT PLAY (mm)	0.025
AMBIENT HUMIDITY MAX. 85% (NO CONDENSATION)	AT LOAD MAX: (N)	10 5.0

SCALE FREE	APVD			
	S.K.K.	CHKD	DRN	J.W.
X ±0.5				
1PL ±0.2				
2PL ±0.1				
ANGLE ±30°				

TYPE OF CONNECTION (EXTERN)	MOTOR			
	UNIPOLAR	1WINDING	BIPOLAR SERIAL	PARALLEL
A	A	A	A	A
COM				
B	B	B	B	B
COM				



STEPPING MOTOR

REV	DESCRIPTION	DATE	APVD	SH5618S2608	DATE	SH5618S2608