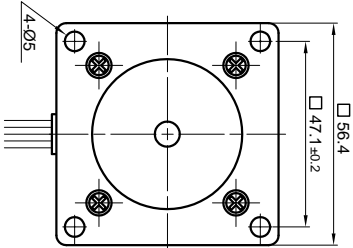
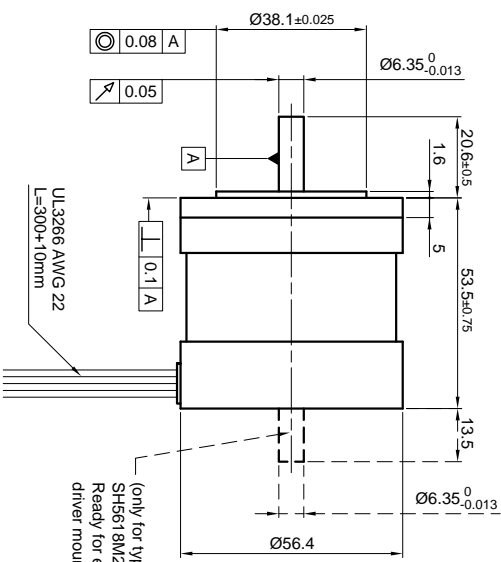


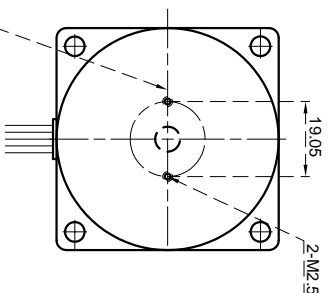
Front view and mounting



Side view

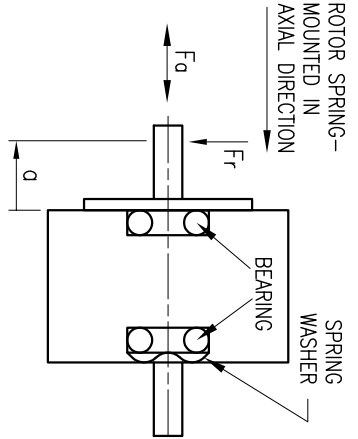


Rear view



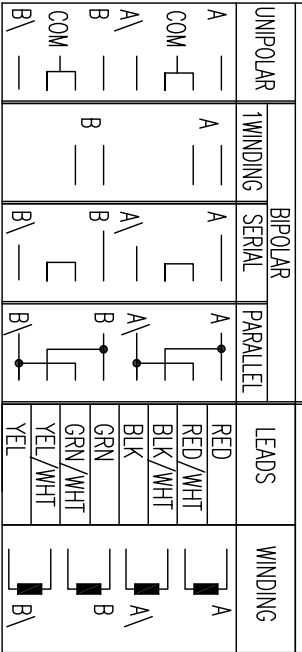
SPECIFICATION	CONNECTION	
	UNIPOLAR OR BIPOLAR-1 WINDING	BIPOLAR
VOLTAGE (VDC)	3.7	SERIAL 5.23
AMPS/PHASE	2.6	PARALLEL 1.84
RESISTANCE/PHASE (Ohms)@25°C	1.42±15%	2.84±15%
INDUCTANCE/PHASE (mH) @1KHz	2.6±20%	10.4±20%
HOLDING TORQUE (Nm) [lb-in]	0.60 [5.31]	0.848 [7.505]
DETTENT TORQUE (Nm) [lb-in]	0.018 [0.159]	0.848 [7.505]
STEP ANGLE (°)		1.8
STEP ACCURACY (NON-ACCUM)		±5%
ROTOR INERTIA (kg-m <sup>2</sup> ) [lb-in <sup>2</sup> ]		1.30x10 <sup>-5</sup> [0.044]
WEIGHT (kg) [lb]		0.55 [1.213]
TEMPERATURE RISE: MAX.80°C (MOTOR STANDSTILL; FOR 2 PHASE ENERGIZED)		
AMBIENT TEMPERATURE -10°~ 50°C [14°F ~ 122°F]		
INSULATION RESISTANCE 100 Mohm (UNDER NORMAL TEMPERATURE AND HUMIDITY)		
INSULATION CLASS B 130° [266°F]		
DIELECTRIC STRENGTH 500VAC FOR 1 MIN. (BETWEEN THE MOTOR COILS AND THE MOTOR CASE)		
AMBIENT HUMIDITY MAX. 85% (NO CONDENSATION)		

PERMISSIBLE RADIAL+AXIAL FORCE



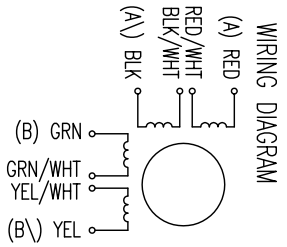
AXIAL-FORCE Fa (N)	Fa=10			
DISTANCE a (mm)	5	10	15	20
RADIAL-FORCE Fr (N)	130	90	70	52
SHAFT PLAY (mm)	0.075			
AT LOAD MAX: (N)	10			

TYPE OF CONNECTION (EXTERN)



FULL STEP 2 PHASE-Ex, WHEN FACING MOUNTING END (X)

STEP	A	B	A\	B\	CCW
1	+	+	-	-	
2	-	+	+	-	
3	-	-	+	+	
4	+	-	-	+	



NANOTEC:

SH5618M2608

REV	DESCRIPTION	DATE	APVD

SCALE	FREE	APVD
X	±0.5	<b>S.K.</b>
1PL	±0.2	CHKD
2PL	±0.1	DRN
ANGLE	±30°	SIGNATURE

STEPPING MOTOR

DATE	DWG.NO
13.07.06	
12.07.06	
	SH5618M2608