



OPTIONS



SOFTWARE



TECHNICAL DATA

Operating voltage	24-48 VDC
Max. phase current	Adjustable via software up to 10.5 A (1% increments), 100% = 7 A
Interface	RS485 or CANopen
Operating mode	Position, speed, flag position, clock-direction, analog, analog position, torque
Position monitoring	Automatic error correction up to 0.9°
Operating mode	1/1, 1/2, 1/4, 1/5, 1/8, 1/10, 1/32, 1/64 adaptive (1/128)
Step frequency	0 to 50 kHz in clock-direction mode, 0 to 25 kHz in all other modes
Inputs	6 opto-coupler inputs (5-24 V), analog input
Outputs	Open drain (0 switching, max. 24 V/0.5 A)
Current reduction	Adjustable in 1% increments
Protective circuit	Overvoltage, undervoltage and temperature >80°C, integrated ballast switching
Temperature range	0 to + 40°C
Connection type	2x2 m cable/TWINTUS plug
New functions	Closed loop/sinusoidal commutation programmable as a sequential controller using NanoJ Easy (RS485)

ORDER IDENTIFIER

PD6-N8918S6404

ACCESSORIES

- Z-K4700/50** Charging Capacitor
- Z-K10000/100** Charging Capacitor
- ZK-RS485-USB** Converter
- ZIB-PDx-N** Additional Board

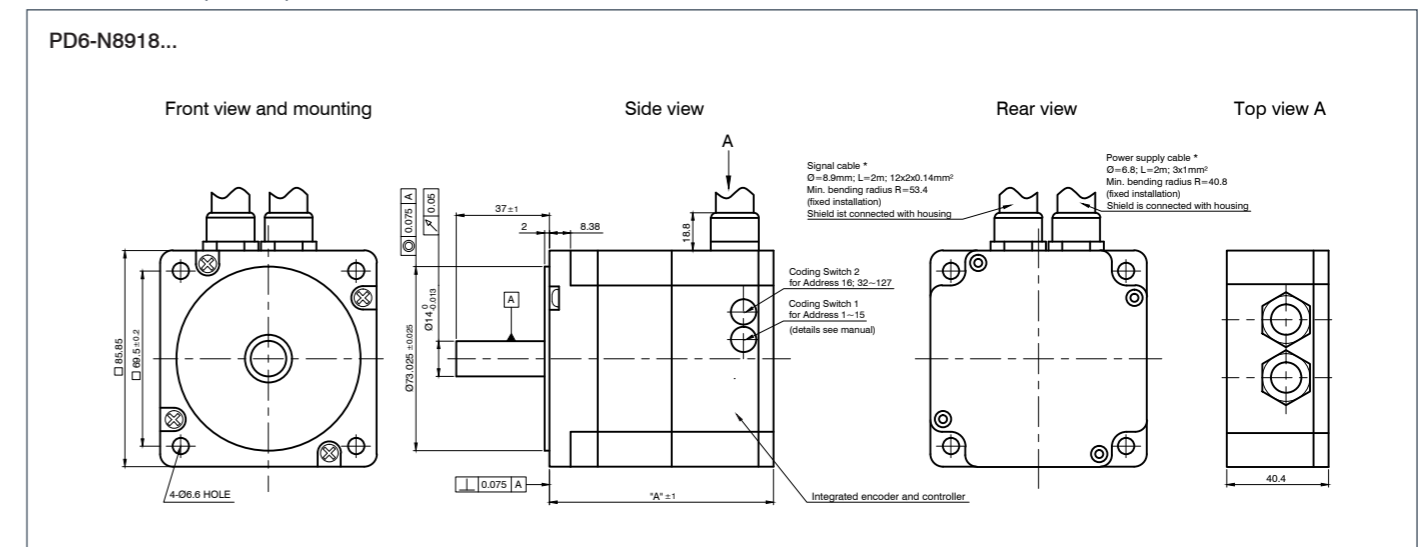
CAUTION

We recommend using a back-up capacitor of sufficient size to stabilize the operating voltage.

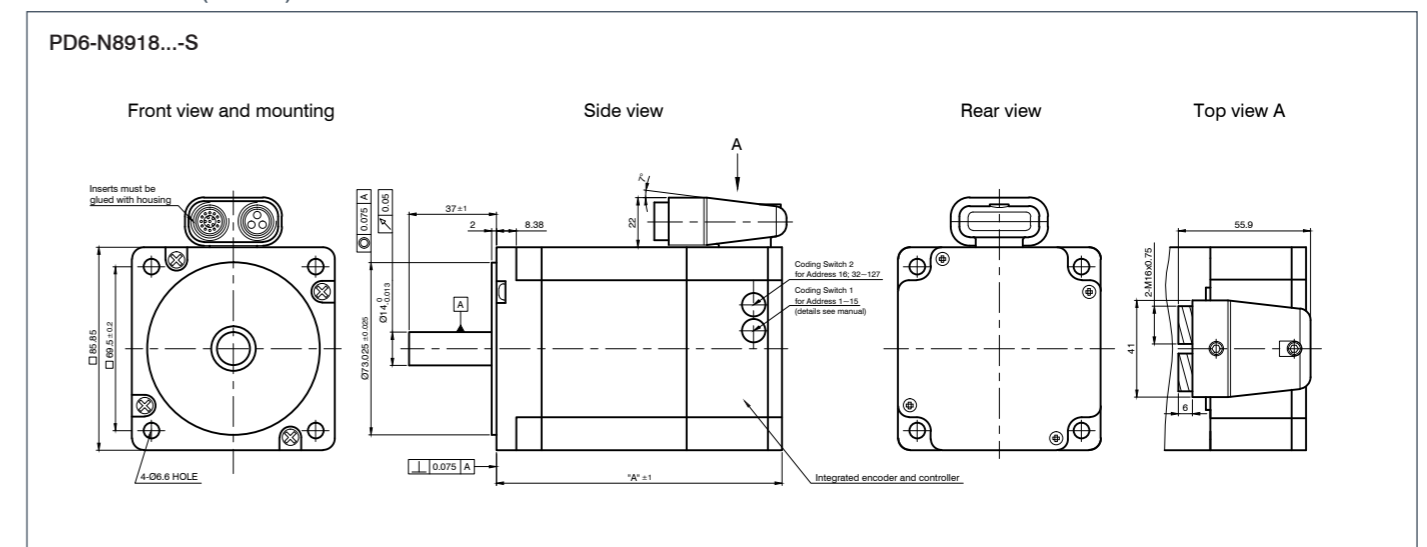
VERSIONS

Type	Holding Torque Ncm	Weight kg	Length „A“ mm	Twinuts Connector	Protection Class
PD6-N8918S6404	320	1.7	89		IP 65
PD6-N8918S6404-S	320	1.7	89	X	IP 65
PD6-N8918M9504	590	3.4	121		IP 65
PD6-N8918M9504-S	590	3.4	121	X	IP 65
PD6-N8918L9504	933	3.95	151		IP 65
PD6-N8918L9504-S	933	3.95	151	X	IP 65

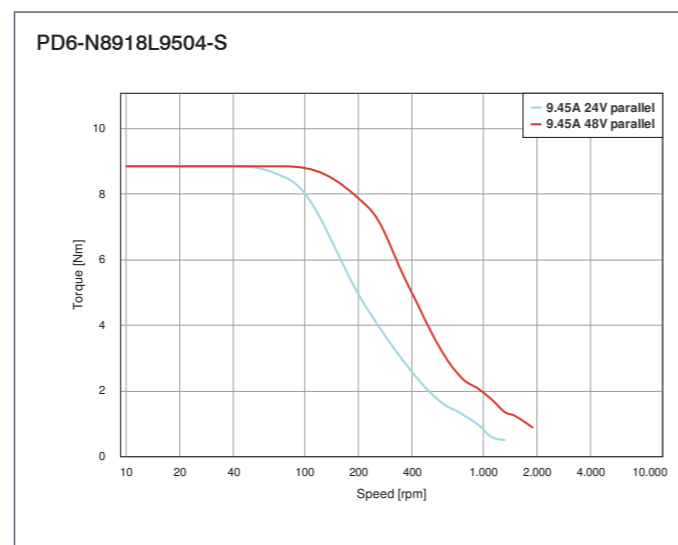
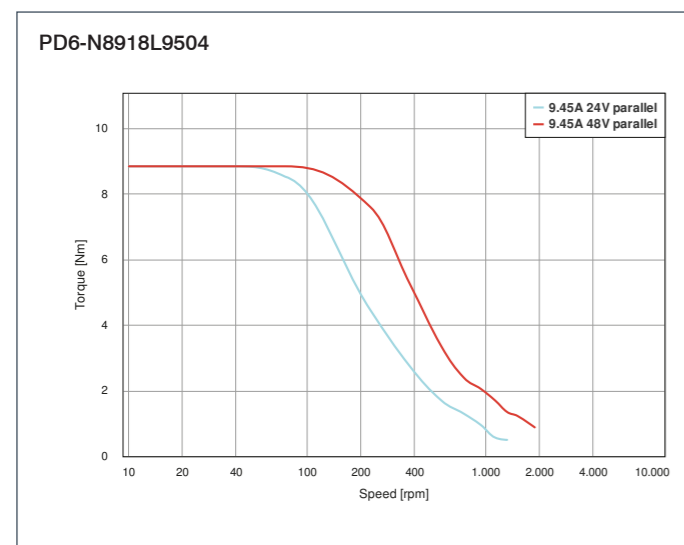
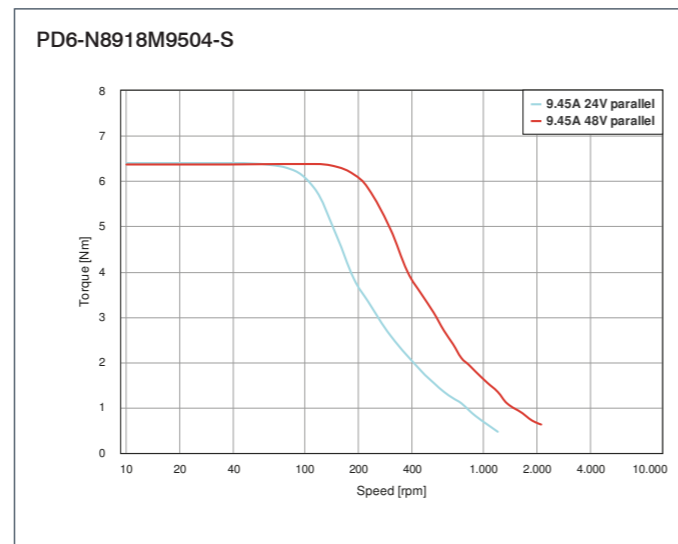
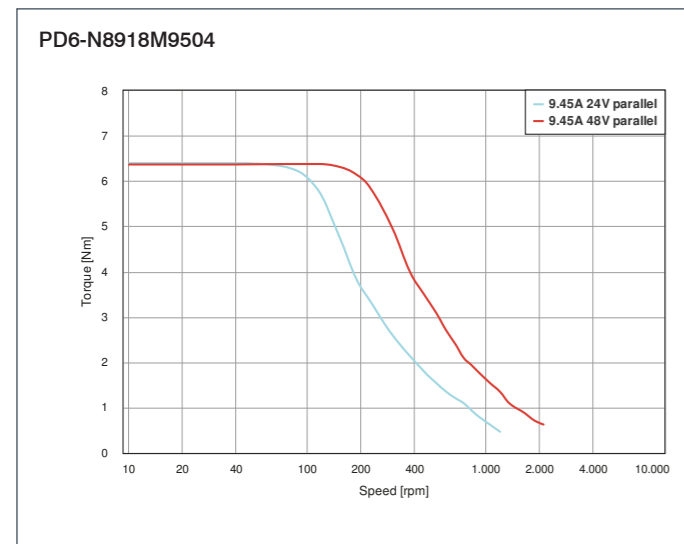
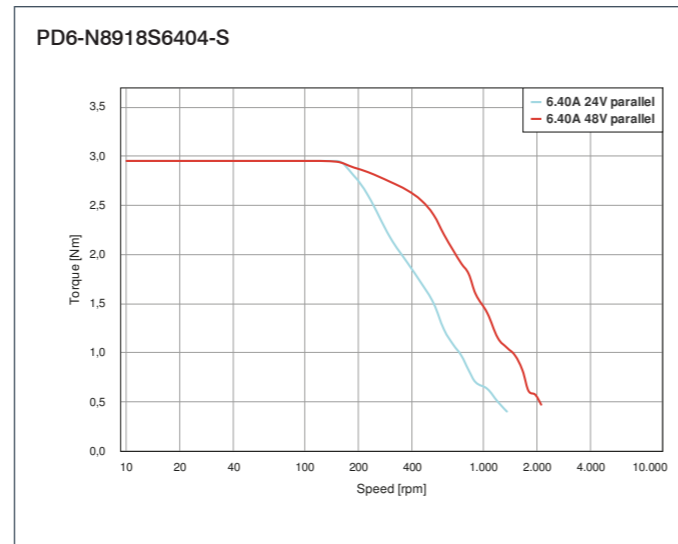
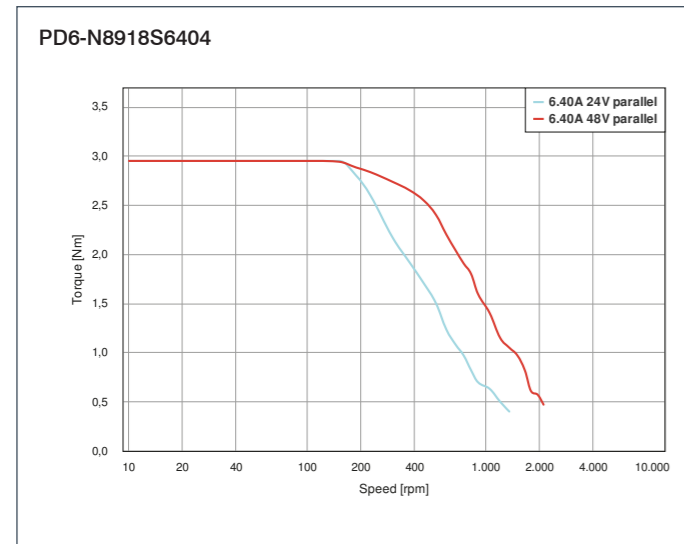
DIMENSIONS (IN MM)



DIMENSIONS (IN MM)



TORQUE CURVES



Notes section with horizontal dotted lines for writing.